

HOME AND LAND PACKAGE



\$326,795*

ENDEAVOUR 1219
TRADITIONAL FACADE

Lot 151 Sawmill , Viewpoint , Huntly

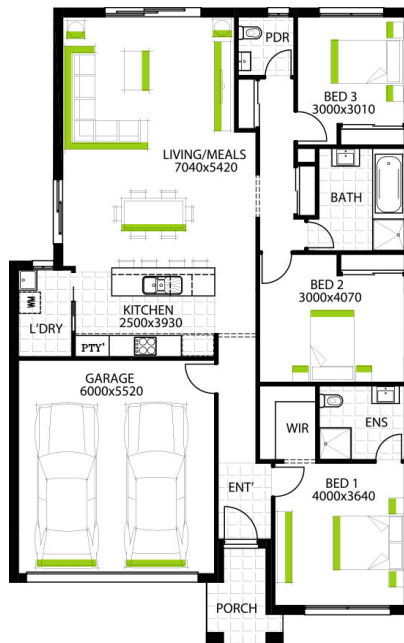
SIZE:

LAND: 576 m2
HOME: 19 sqs



PACKAGE INCLUDES:

- » Fixed Site Costs, NBN Provision & Council Requirements.
- » Tiled Porch.
- » All Floorcoverings & Stainless Steel Appliances.
- » Sectional Panel Lift Garage Door c/w 2 Remotes.
- » Ensuite, Bathroom & Powder Room.
- » Selection of Professional Exterior & Interior Colour Themes.
- » Concrete Driveway and Path



WELSH
homes

Image may include upgrade items and may depict fixtures, finishes and features not supplied by Welsh Homes such as landscaping and fencing. Accordingly, any prices in this flyer do not include the supply of any of those items. *Home and Land Package price correct at time of printing and subject to change without notice. Package price excludes external lighting, telephone service, stamp duty on land, legal fees and conveyancing costs including titles and property report. Floorplan is representation of facade depicted unless otherwise stated. Welsh Homes reserves the right to alter the images or descriptions without notice. See your Welsh Homes sales consultant for full details of standard inclusions. Land supplied by developer. Land prices and availability are subject to change without notice. All home & land packages are subject to developer approval.

0400 794 212 | James Hanley | james.hanley@welshhomes.com.au | WELSHHOMES.COM.AU