



# HOME AND LAND PACKAGE



3



2



2

## \$339,840\*

CAPITAL 1219  
TRADITIONAL FACADE

Lot 22 Poppethead Road , Golden Grove , Jackass Flat

### SIZE:

LAND: 576 m2  
HOME: 19 sqs



### PACKAGE INCLUDES:

- » Fixed site costs, NBN/Opticomm provision & council requirements.
- » Stone benchtops to kitchen and overhead cupboards incl. over the fridge
- » 900mm stainless steel appliances including dishwasher.
- » All flooring coverings: carpet, tiles or timber laminate.
- » Concrete driveway & path (Up to 35m2).
- » Tiled shower bases, shower rail assembly with semi frameless shower screens.
- » Sectional panel lift garage door with 2 remotes.
- » Professionally selected exterior & interior colour scheme options.
- » Developer guidelines & covenants.

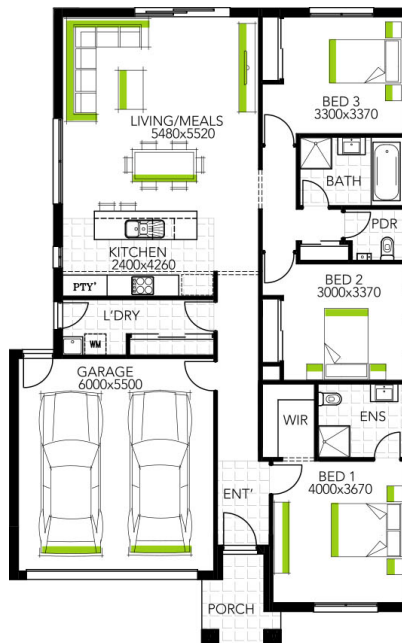




Image may include upgrade items and may depict fixtures, finishes and features not supplied by Welsh Homes such as landscaping and fencing. Accordingly, any prices in this flyer do not include the supply of any of those items. \*Home and Land Package price correct at time of printing and subject to change without notice. Package price excludes external lighting, telephone service, stamp duty on land, legal fees and conveyancing costs including titles and property report. Floorplan is representation of facade depicted unless otherwise stated. Welsh Homes reserves the right to alter the images or descriptions without notice. See your Welsh Homes sales consultant for full details of standard inclusions. Land supplied by developer. Land prices and availability are subject to change without notice. All home & land packages are subject to developer approval. Fast Tracked packages include strict terms and conditions, refer to [welshhomes.com.au](http://welshhomes.com.au) for details.

0418 584 107 | Katrina Turner | [katrina.turner@welshhomes.com.au](mailto:katrina.turner@welshhomes.com.au) | [WELSHHOMES.COM.AU](http://WELSHHOMES.COM.AU)